

LANDSCAPE SPECIFICATION NOTES

GENERAL

All works are to be performed by suitably qualified and experienced trades persons in landscape works. All works shall be supervised by a qualified superintendent.

Services identification

The contractor shall verify the position of all services prior to the commencement of works and take all necessary precautions to protect services during implementation works.

Site establishment

The contractor shall establish site access and compound in position agreed with the Superintendent and or subject to Council approval. The Contractor shall be totally responsible for protecting the site works during construction and establishment including vegetation, pedestrian and vehicular management.
To note, all landscape drawings to be read in conjunction and subject to the architectural drawings and specification.All samples to be submitted to superintendent.

FURNITURE AND FIXTURES

All furniture, fixtures, or product items to be installed as per manufacturer's specification.

SOFT LANDSCAPE WORKS

SOIL MIX

Imported Soil Mix: All planter areas shall have a minimum soil depth of 300mm and 150mm to turf | grass areas with landscape quality soil that conforms to AS 4419 Soils for Landscape and Gardens and AS445a Compost, Soil conditioners and Mulches.
Soil conditioners and Mulches: A typical imported topsoil mix would be equal to UltraGrow Podium Soil On Slab A' from Centenary Landscaping Supplies. The Contractor must submit 1kg samples of the topsoil as the 'approved' sample with test data confirming compliance with the Australian Standard.

Modified Site Soil: For existing planters stockpiled topsoil for landscape works maybe used and modify with chemical | composted additives, to achieve Australian Standard. The Contractor must submit 1kg samples of the topsoil as the 'approved' sample with test data confirming compliance with the Australian Standard and equivalence to 'UltraGrow Podium Soil On Slab A' from Centenary Landscaping Supplies.

FERTILISER

Apply slow release fertiliser at the time of planting to planter bed areas strictly in accordance with the manufacturers specification and with regard to season, soil mix, watering regimes and sub grade conditions.

PLANTER AREAS

Shall be constructed to the extent nominated on the plan including 150mm cultivation, imported or improved top soils to 300mm depth, 75mm depth mulch and staking of plant materials exceeding 45L container size. Planter areas should be maintained at a maximum 1:3 grade.

PLANT MATERIALS

Refer to the plant schedule. The contractor shall ensure that all plant materials are secured immediately uponaward of contract. Failure to do so will not give rise to substitutions or extensions of time. All stock shall be grown in open areas or shady areas which represent site conditions of where they will be installed, this will involve expose to sun to the sun or shade and wind to promote vigorous plant growth and to harden plants off.
All plant material shall be pest and disease free. All plant material shall not be root bound or damaged. Plant densities shall reflect accepted industry standards and Councils guidelines for Landscape Works and be sourced from an accredited nursery.

MULCH

Supply and place specified mulch to planter areas. Blended Cypress Fines: Apply to all planter areas. Mulch is to be free of deleterious and extraneous matter such as soil, weeds and sticks. Spread mulch evenly to 75mm depth or as otherwise noted on the Drawings. Finish 25mm below surrounding finished levels or as detailed. Place mulch clear of plant stems, and rake to an even surface flush with the surrounding finished levels.

We acknowledge the Traditional Custodians of the land on which this project is sited, and pay respects to their Elders past, present and emerging.

Revision			
REV	DESCRIPTION	DATE	APP.
A	DRAFT PUG 02 PACK	30/04/2024	
B	ISSUED FOR REVIEW	20/05/2024	

Client

**HEALTH
INFRASTRUCTURE**

Project

**BATEMANS BAY
COMMUNITY HEALTH**

Drawing

SPECIFICATION NOTES

A1 Scale

Project No. 22 311

Revision B

Number DD - LA - DR - 1001

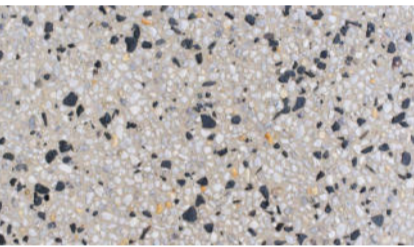
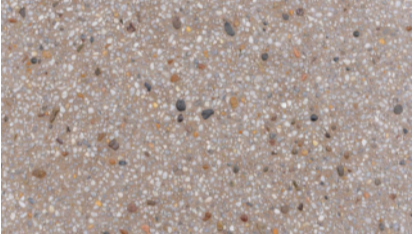
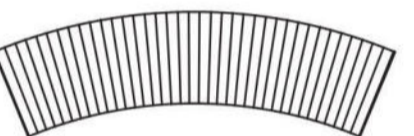

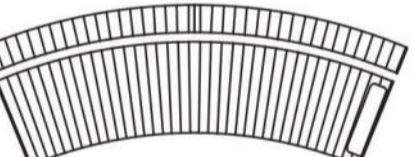
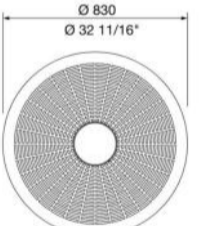
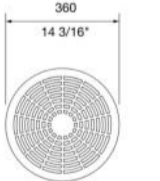
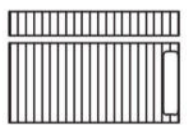

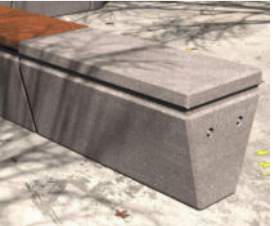
Details

© Architectus Conrad Gargett, ACN 131 245 684 ABN 90 131 245 684
Do not scale this drawing and verify all dimensions and levels on site.
Nominated Architect : Lawrence Toaldo NSWARB Reg. 10255.
Nominated Architect : Ray Brown NSWARB Reg. 6359.

0mm 40 80mm



PRELIMINARY

CODE	MATERIAL TYPE	DESCRIPTION	SUPPLIER	
LA1	TOP SOIL HORIZON A	HORIZON A 'SMARTMIX: NATIVE GARDEN SOIL MIX NO.6' (TO DEPTH UP TO 300MM).	BENEDICT INDUSTRIES	
LA2	HORIZON B SOIL	HORIZON B 'SMARTMIX: NATIVE GARDEN SUB-SOIL MIX NO.7' MIXED 50:50 WITH SITE TOPSOIL INCLUDING SOIL ADDITIVES, AS REQUIRED.	BENEDICT INDUSTRIES	
LA3	ORGANIC MULCH	FOREST ECO-FINES" AS SUPPLIED BY AUSTRALIAN NATIVE LANDSCAPES OR EQUIVALENT.	FOREST ECO-FINES	
LA4	SLOW RELEASE FERTILIZER	PRODUCT : OSMOCOTE® CONTROLLED RELEASE PLANT FOOD, AGRIFORM® PLANTING TABLETS, MAGAMP® K SLOW RELEASE FERTILISER (OR SIMILAR)	SCOTTS OSMOCOTE, MAGAMP	
PV1	ECLIPSE EXPOSED	PRODUCT : ECLIPSE EXPOSED (GREY), GEOSTONE	GEOSTONE	
PV2	MAKEPEACE EXPOSED	PRODUCT : MAKEPEACE EXPOSED (TAN), GEOSTONE	GEOSTONE	
ST1	WANDIN MODULAR SUITE TYPE 1	PRODUCT : WANDIN LARGE CURVE BENCH CONCAVE,WANDIN CONCRETE PLINTH OUTER ARC LENGTH :1812MM INNER ARC LENGTH: 1498MM BATTENS : ENVIROSLAT COMPOSITE	DRAFFIN STREET FURNITURE	
ST2	WANDIN MODULAR SUITE TYPE 2	PRODUCT : WANDIN LARGE CURVE BENCH CONCAVE WITH BACKREST, ARM SUPPORT LEFT END, WANDIN CONCRETE PLINTH OUTER ARC LENGTH :1812MM INNER ARC LENGTH: 1498MM BATTENS : ENVIROSLAT COMPOSITE	DRAFFIN STREET FURNITURE	
ST3	WANDIN MODULAR SUITE TYPE 3	PRODUCT : WANDIN LARGE CURVE BENCH CONCAVE WITH BACKREST, ARM SUPPORT RIGHT END, WANDIN CONCRETE PLINTH OUTER ARC LENGTH :1812MM INNER ARC LENGTH: 1498MM BATTENS : ENVIROSLAT COMPOSITE	DRAFFIN STREET FURNITURE	
ST4	CAFE TABLE	PRODUCT : 830DIA W X 720H (MM) CAST ALUMINIUM POWDER COATED SUBSURFACE FIXED COLOR : WEDGEWOOD (DARK BLUE)	STREET FURNITURE	
ST5	CAFE STOOL	PRODUCT : 360DIA W X 450H (MM) CAST ALUMINIUM POWDER COATED SUBSURFACE FIXED COLOR : WEDGEWOOD (DARK BLUE)	STREET FURNITURE	
ST6	WANDIN MODULAR SUITE TYPE 4	PRODUCT : WANDIN STANDARD STRAIGHT BENCH WITH BACKREST, ARMREST RIGHT END, WANDIN CONCRETE PLINTH LENGTH - 860MM WIDTH - 400MM BATTENS : ENVIROSLAT COMPOSITE	DRAFFIN STREET FURNITURE	
ST7	WANDIN MODULAR SUITE TYPE 5	PRODUCT : WANDIN STANDARD STRAIGHT BENCH WITH BACKREST, NO ARMREST , WANDIN CONCRETE PLINTH LENGTH - 860MM WIDTH - 400MM BATTENS : ENVIROSLAT COMPOSITE	DRAFFIN STREET FURNITURE	
C1	CONCRETE BENCH	PRODUCT : WANDIN FULL CONCRETE BENCH, NO BATTENS. LENGTH - 860MM WIDTH - 400MM	DRAFFIN STREET FURNITURE	

NOTE: SOIL THAT CONTAINS ORGANIC MATTER, SUPPORTS PLANT LIFE, IS FREE FROM UNWANTED MATTER SUCH AS STONES OVER 25 MM DIAMETER, CLAY LUMPS, WEEDS AND TREE ROOTS, STICKS AND RUBBISH AND MATERIAL TOXIC TO PLANTS. SOIL TEST WITH RECOMMEND SOIL ADDITIVES IS TO BE CARRIED OUT TO ENSURE THE OPTIMUM GROWING CONDITIONS ARE OBTAINED. THE CONTRACTOR SHALL PREPARE APPROVED TOPSOIL OPTION. ALL MATERIALS SHALL CONFORM TO THE FOLLOWING
CURRENT STANDARDS:
• AS 4419 SOILS FOR LANDSCAPING AND GARDEN USE
• AS 4454 COMPOSTS, SOIL CONDITIONERS AND MULCHES

We acknowledge the Traditional Custodians of the land on which this project is sited, and pay respects to their Elders past, present and emerging.

Revision			
REV	DESCRIPTION	DATE	APP.
A	DRAFT PUG 02 PACK	30/04/2024	
B	ISSUED FOR REVIEW	20/05/2024	
C	ISSUED FOR REVIEW	07/06/2024	

Client

**HEALTH
INFRASTRUCTURE**

Project

**BATEMANS BAY
COMMUNITY HEALTH**

Drawing

MATERIAL SCHEDULE

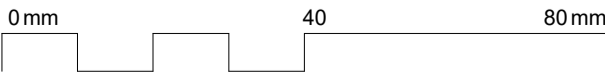
PRELIMINARY

A1 Scale
Project No. 22 311
Revision C

Number DD - LA - DR - 1002

Details

© Architectus Conrad Gargett, ACN 131 245 684 ABN 90 131 245 684
Do not scale this drawing and verify all dimensions and levels on site.
Nominated Architect : Lawrence Toaldo NSWARB Reg. 10255.
Nominated Architect : Ray Brown NSWARB Reg. 6359.



PLANTING SCHEDULE							
Groundcover ID	Botanical Name	Common Name	Mature Height (MM)	Pot Size	Spacing C/C	Planting Area Count	Medicinal properties
BAN spn	<i>Banksia spinulosa</i>	Cherry candles	500	200mm	550	48	Antibacterial and antifungal properties
CHR api	<i>Chrysocephalum apiculatum</i>	Yellow buttons	400	140mm	300	74	Antioxidant properties and potential anti-inflammatory effects
CRI ped	<i>Crinum pedunculatum</i>	Swamp lily	900	200mm	550	14	
DIA cae	<i>Dianella caerulea</i>	Blue flax-lily	600	150mm	300	162	Roots used for treating skin conditions
DIC arg	<i>Dichondra argentea</i> 'Silver Falls'	Kidney weed	150	150mm	250	58	
FIC nod	<i>Ficinia nodosa</i>	Knobby club-rush	400	140mm	250	58	
GRE rhy	<i>Grevillea rhyolitica</i> x <i>juniperina</i> 'TWD01' PBR	Cherry Cluster	500	200mm	350	90	
LAM gla	<i>Lampranthus glaucus</i>	Ice plant	300	200mm	300	84	
LOM con	<i>Lomandra confertifolia</i> 'Little Con'	Dwarf Mat rush	600	400mm	300	96	Leaves used for wound dressing and relief
LYT sal	<i>Lythrum salicaria</i>	Purple loosestrife	600	140mm	350	72	Used as herbal medicine
MEL thy	<i>Melaleuca thymifolia</i>	Thyme honey-myrtle	950	200mm	800	12	Antibacterial and antifungal properties
PEL aus	<i>Pelargonium australe</i>	Native storksbill	500	140mm	450	33	Potential antimicrobial properties
PHI myo	<i>Philotheca myoporoides</i> 'Profusion'	Wax flower	1000	200mm	750	11	Potential antimicrobial properties
POA poi	<i>Poa poiformis</i>	Poa Coastal Tussock	600	200mm	300	64	
PYC glo	<i>Pycnosorus globosus</i>	Billy Buttons	600	200mm	450	10	Potential antimicrobial properties
VIO hed	<i>Viola hederacea</i>	Native violet	150	140mm	200	637	Anti-inflammatory properties
WES fru	<i>Westringia hybrid</i> 'WES08' PBR	Ozbreed Aussie Box	950	200mm	500	38	

1561

PLANTING

INDICATIVE PHOTOS OF SELECT SPECIES BELOW. REFER TO PLANTING SCHEDULE FOR FULL PLANT LIST.



ASPLENIUM AUSTRALASICUM



ANIGOZANTHOS HYBRID 'KP03'



BANKSIA SPINULOSA 'CHERRY Candles'



BLECHNUM NUDUM



BACKHOUSIA CITRIODORA



CHRYSOCEPHALUM APICULATUM



CRINUM PEDUNCULATUM



DIANELLA CAERULEA



DICHONDRA REPENS



TRISTANIOPSIS LAURINA



GREVILLEA RHYOLITICA



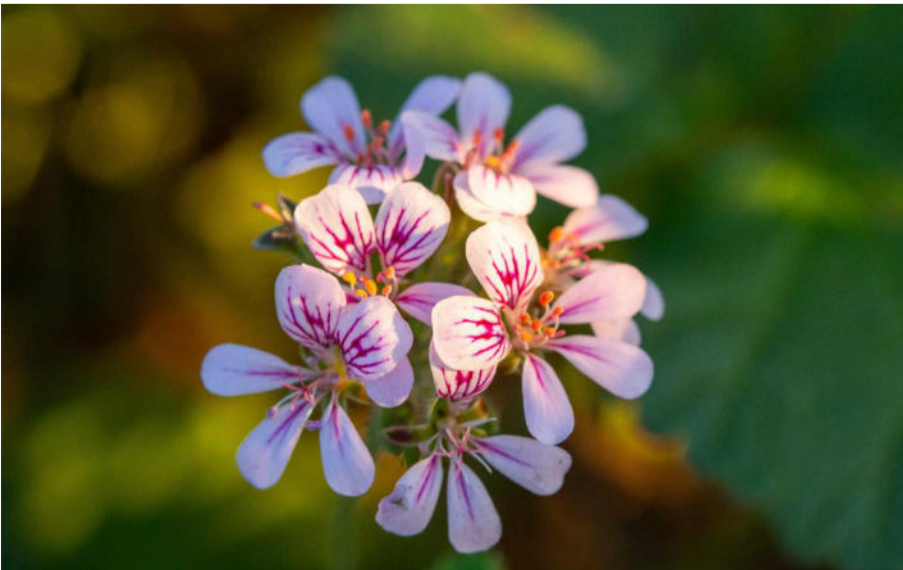
LOMANDRA CONFERTIFOLIA



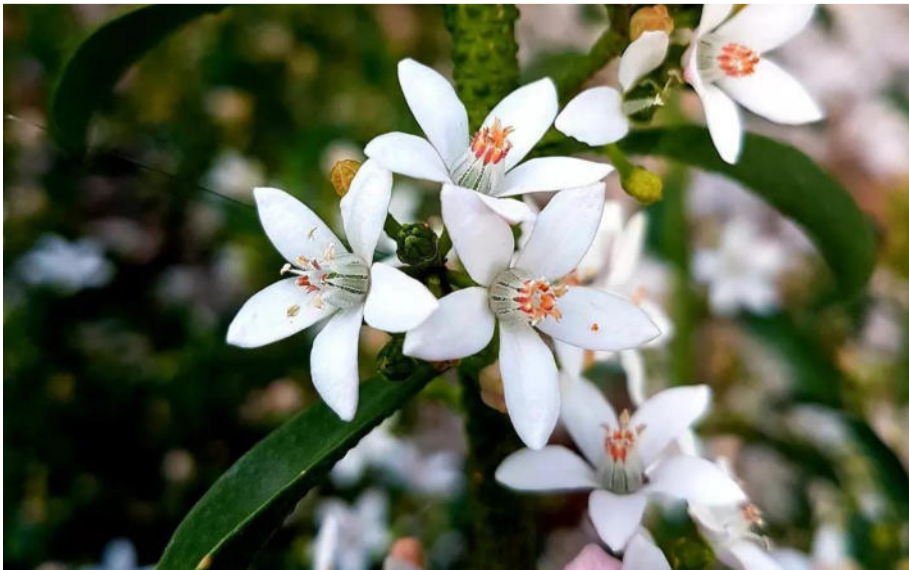
LYTHRUM SALICARIA



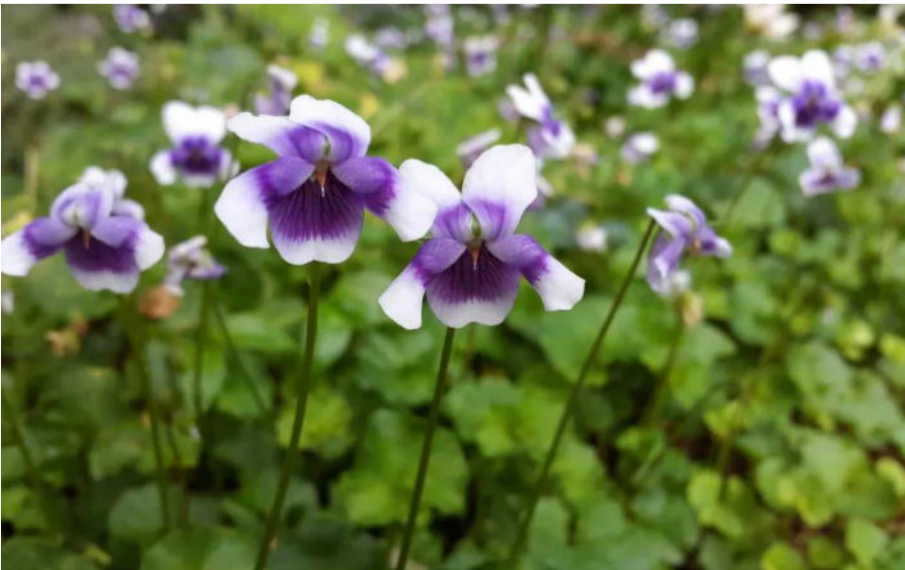
MELALEUCA THYMIFOLIA



PELARGONIUM AUSTRALE



PHILOTHECA MYOPOROIDES



VIOLA HEDERACEA



WESTRINGIA FRUTICOSA

PLANTING SCHEDULE - TREES						
TREE CODE	BOTANICAL NAME	COMMON NAME	EXPECTED MAURE TREE HEIGHT	EXPECTED MATURE TREE WIDTH	TREE SUPPLY SIZE	QTY
BAC cit	<i>Backhousia citriodora</i>	Lemon myrtle	4000	3000	Pot Size : 100L	6
TRI lau	<i>Tristaniopsis laurina</i>	Water Gum	8000	5000	Pot Size : 200L	3
9						
PLANTING SCHEDULE - SPECIMEN PLANTS						
CODE	BOTANICAL NAME	COMMON NAME	EXPECTED MAURE HEIGHT	EXPECTED MAURE WIDTH	POT SIZE	Count
ANI hyb	<i>Anigozanthos hybrid</i> 'KP03'	Kangaroo paw 'Everlasting Mega Gold'	550	450	- : 200mm	39
ASP aus	<i>Asplenium australasicum</i>	Birds nest fern	400	700	- : 200mm	4
BLE nud	<i>Blechnum nudum</i>	Fishbone water fern	1000	1000	- : 200mm	6
LEU bro	<i>Leucophyta brownii</i>	Cushion Bush	1200	750	- : 200mm	6
MAC com	<i>Macrozamia communis</i>	Burrawang	2000	2000	- : 200mm	2
57						

TREES

We acknowledge the Traditional Custodians of the land on which this project is sited, and pay respects to their Elders past, present and emerging.

Revision			
REV	DESCRIPTION	DATE	APP.
A	DRAFT PUG 02 PACK	30/04/2024	
B	ISSUED FOR REVIEW	20/05/2024	
C	ISSUED FOR REVIEW	07/06/2024	

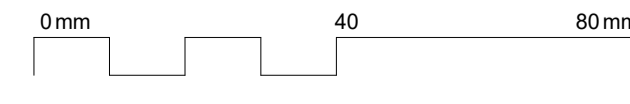
Client
HEALTH INFRASTRUCTURE

Project
BATEMANS BAY COMMUNITY HEALTH

Drawing
PLANTING SCHEDULE

A1 Scale
Project No. 22 311
Revision C
Number DD - LA - DR - 1101

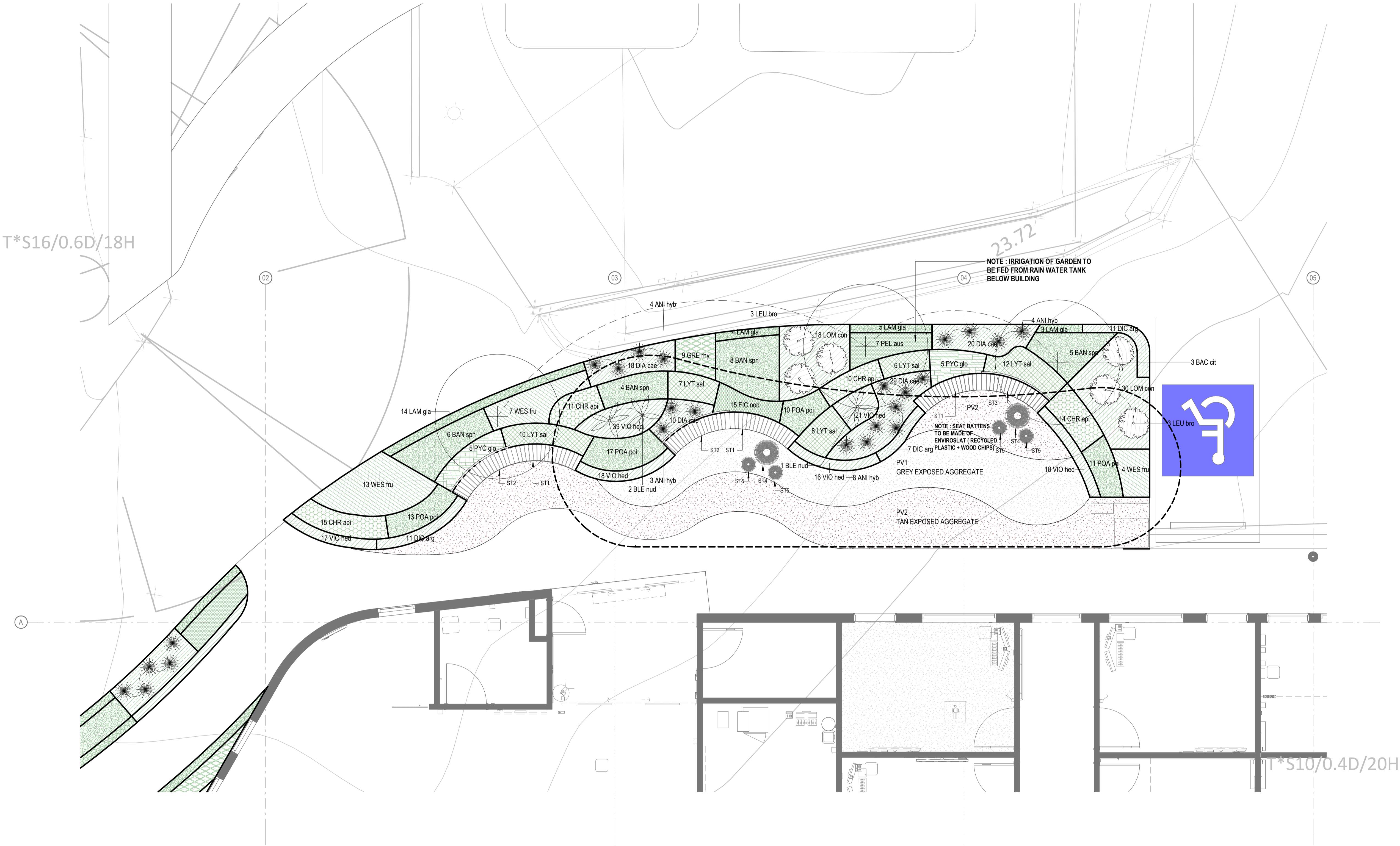
Details
© Architectus Conrad Gargett, ACN 131 245 684 ABN 90 131 245 684
Do not scale this drawing and verify all dimensions and levels on site.
Nominated Architect : Lawrence Toaldo NSWARB Reg. 10255.
Nominated Architect : Ray Brown NSWARB Reg. 6359.



PRELIMINARY

We acknowledge the Traditional Custodians of the land on which this project is sited, and pay respects to their Elders past, present and emerging.

T*S16/0.6D/18H



Revision			
REV	DESCRIPTION	DATE	APP.
A	DRAFT PUG 02 PACK	30/04/2024	
B	ISSUED FOR REVIEW	20/05/2024	
C	ISSUED FOR REVIEW	07/06/2024	

Client
HEALTH INFRASTRUCTURE

Project
BATEMANS BAY COMMUNITY HEALTH

Drawing
PLANTING PLAN - 1

PRELIMINARY

A1 Scale	1 : 50	1
Project No.	22 311	
Revision	C	
Number	DD - LA - DR - 1102	

Details
© Architectus Conrad Gargett, ACN 131 245 684 ABN 90 131 245 684
Do not scale this drawing and verify all dimensions and levels on site.
Nominated Architect : Lawrence Toaldo NSWARB Reg. 10255.
Nominated Architect : Ray Brown NSWARB Reg. 6359.



We acknowledge the Traditional Custodians of the land on which this project is sited, and pay respects to their Elders past, present and emerging.

Revision	REV	DESCRIPTION	DATE	APP.
A	DRAFT PUG 02 PACK		30/04/2024	
B	ISSUED FOR REVIEW		20/05/2024	
C	ISSUED FOR REVIEW		07/06/2024	

Client
HEALTH INFRASTRUCTURE

Project
BATEMANS BAY COMMUNITY HEALTH

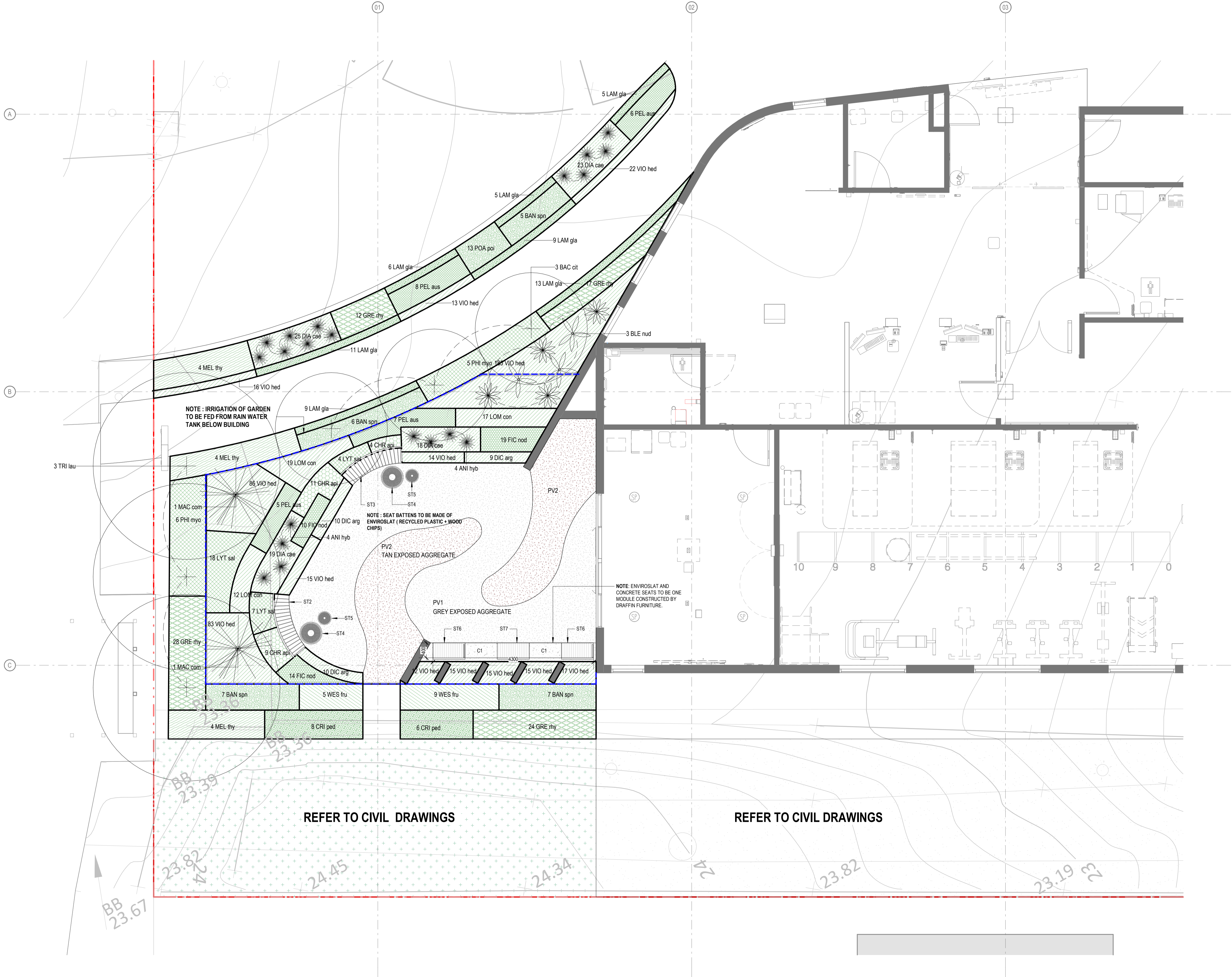
Drawing
PLANTING PLAN - 2

A1 Scale 1 : 50
Project No. 22 311
Revision C

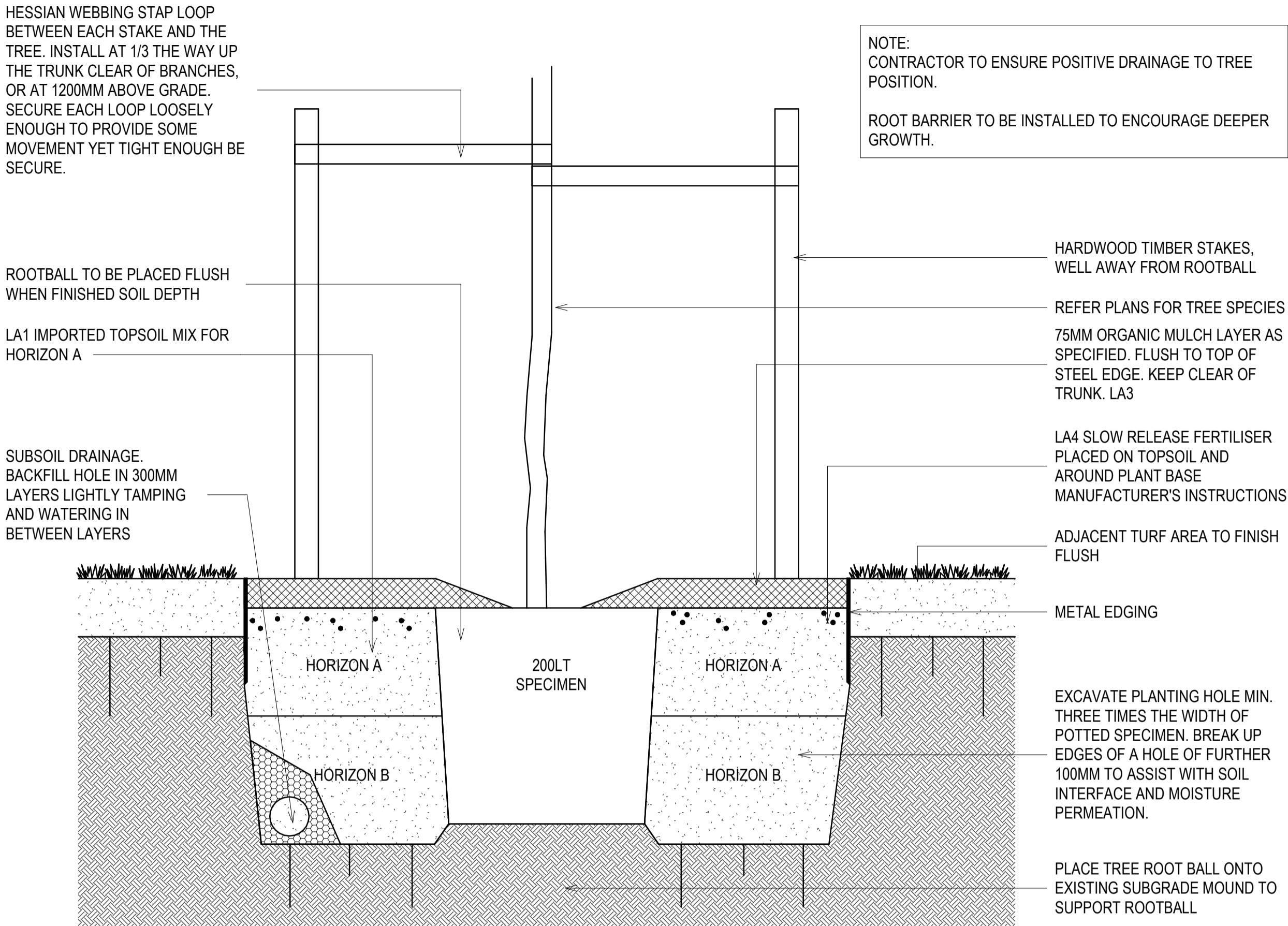
Number DD - LA - DR - 1103

Details
© Architectus Conrad Gargett, ACN 131 245 684 ABN 90 131 245 684
Do not scale this drawing and verify all dimensions and levels on site.
Nominated Architect : Lawrence Toaldo NSWARB Reg. 10255.
Nominated Architect : Ray Brown NSWARB Reg. 6359.

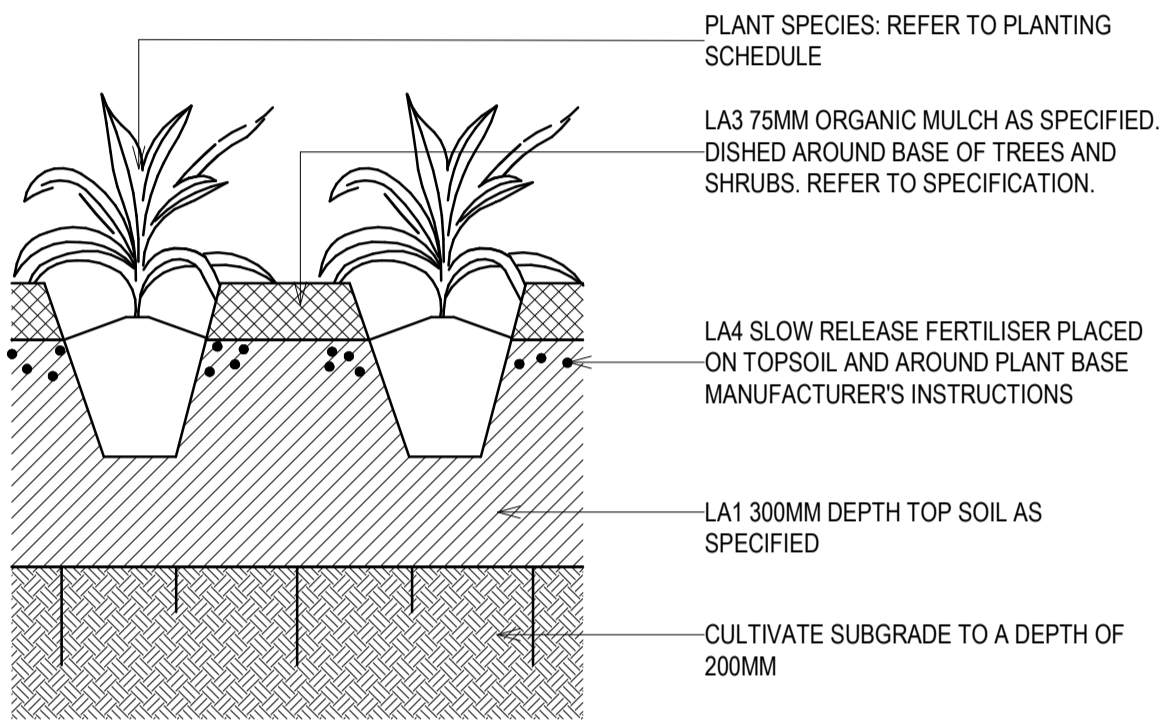
0mm 40 80mm



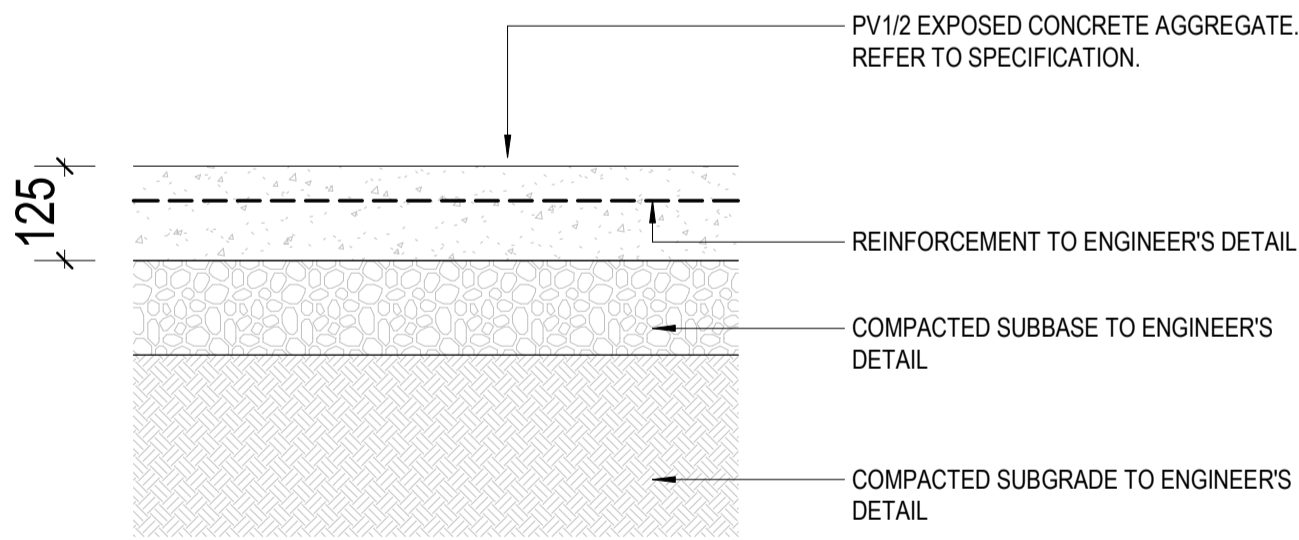
We acknowledge the Traditional Custodians of the land on which this project is sited, and pay respects to their Elders past, present and emerging.



1 TYPICAL DETAIL - TREE PLANTING
1 : 10



2 TYPICAL DETAIL - PLANTING
1 : 10



3 TYPICAL DETAIL - EXPOSED CONCRETE AGGREGATE
1 : 10

Revision			
REV	DESCRIPTION	DATE	APP.
A	DRAFT PUG 02 PACK	30/04/2024	
B	ISSUED FOR REVIEW	20/05/2024	
C	ISSUED FOR REVIEW	07/06/2024	

Client
**HEALTH
INFRASTRUCTURE**

Project
**BATEMANS BAY
COMMUNITY HEALTH**

Drawing
**PLANTING & MATERIAL
DETAILS**

A1 Scale 1 : 10
Project No. 22 311
Revision C
Number DD - LA - DR - 1200

Details
© Architectus Conrad Gargett, ACN 131 245 684 ABN 90 131 245 684
Do not scale this drawing and verify all dimensions and levels on site.
Nominated Architect : Lawrence Toaldo NSWARB Reg. 10255.
Nominated Architect : Ray Brown NSWARB Reg. 6359.

0mm 40 80mm

PRELIMINARY